




VERDE RANCH
 ESTATES
 A CRR LIFESTYLE NEIGHBORHOOD

Welcome to the Neighborhood

VERDE RANCH ESTATES

HOMES NOW AVAILABLE
 We look forward to working together to deliver your dream home.


YOUR DREAM HOME SALES PARTNER

MARK WINNE
 VERDE RANCH ESTATES
 General Manager

Office: 928.482.2607
 Email: Mwinne@crrmgmt.com
verderanchestates.com


VERDE RANCH
 ESTATES
 A CRR LIFESTYLE NEIGHBORHOOD

Sales office: 300 N. Goswick Way
 Camp Verde, AZ. 86322

 Arizona Dept of Housing license #D-8860



CAMP VERDE, ARIZONA
HOMES NOW AVAILABLE

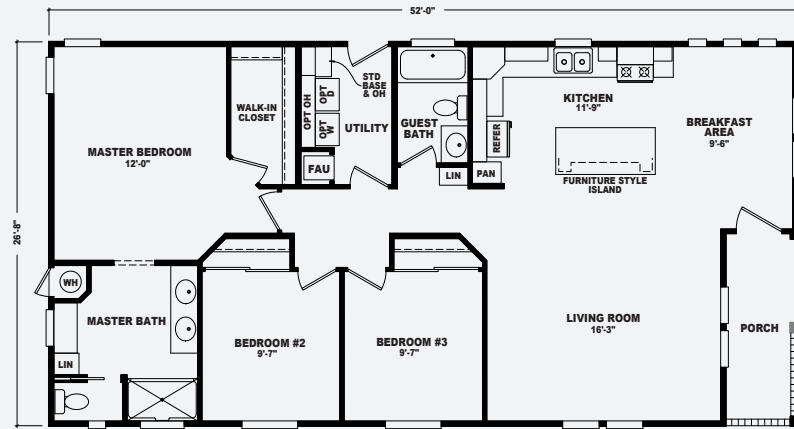


MESA



SIERRA

FLOORPLAN A



MODEL: VC-28523A
 APPROXIMATELY 1386 SQ. FT. TOTAL
 APPROXIMATELY 1320 SQ. FT. LIVABLE
 3 BEDROOM, 2 BATH

SQUARE FOOTAGE


1,320

LOT SIZE


5,500-7,800
 SQ FT

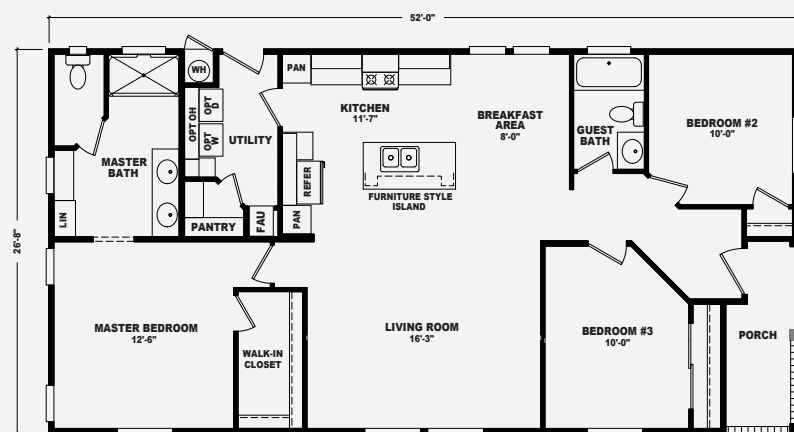
BEDROOMS


3

BATHROOMS


2

FLOORPLAN B



Sales Price: \$109,999
Site Rent: \$495/month

MODEL: VC-28523B
 APPROXIMATELY 1386 SQ. FT. TOTAL
 APPROXIMATELY 1326 SQ. FT. LIVABLE
 3 BEDROOM, 2 BATH

SQUARE FOOTAGE


1,326

LOT SIZE


5,500-7,800
 SQ FT

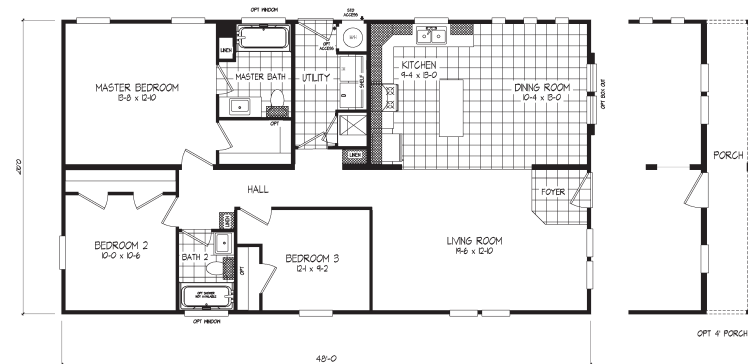
BEDROOMS


3

BATHROOMS


2

FLOORPLAN



MODEL: BBK-28483D
 APPROX. 113 SQ. FT.
 3 BED, 2 BATH
 REV: 4-19

Sales Price: \$98,999
Site Rent: \$495/month
Home Rent: \$1,350/month

SQUARE FOOTAGE


1,173

LOT SIZE


5,500-7,800
 SQ FT

BEDROOMS


3

BATHROOMS


2

Amenities

Verde Ranch Estates offers a beautiful gated community pool, clubhouse, playground, pet park, hiking and walking trails, and more!