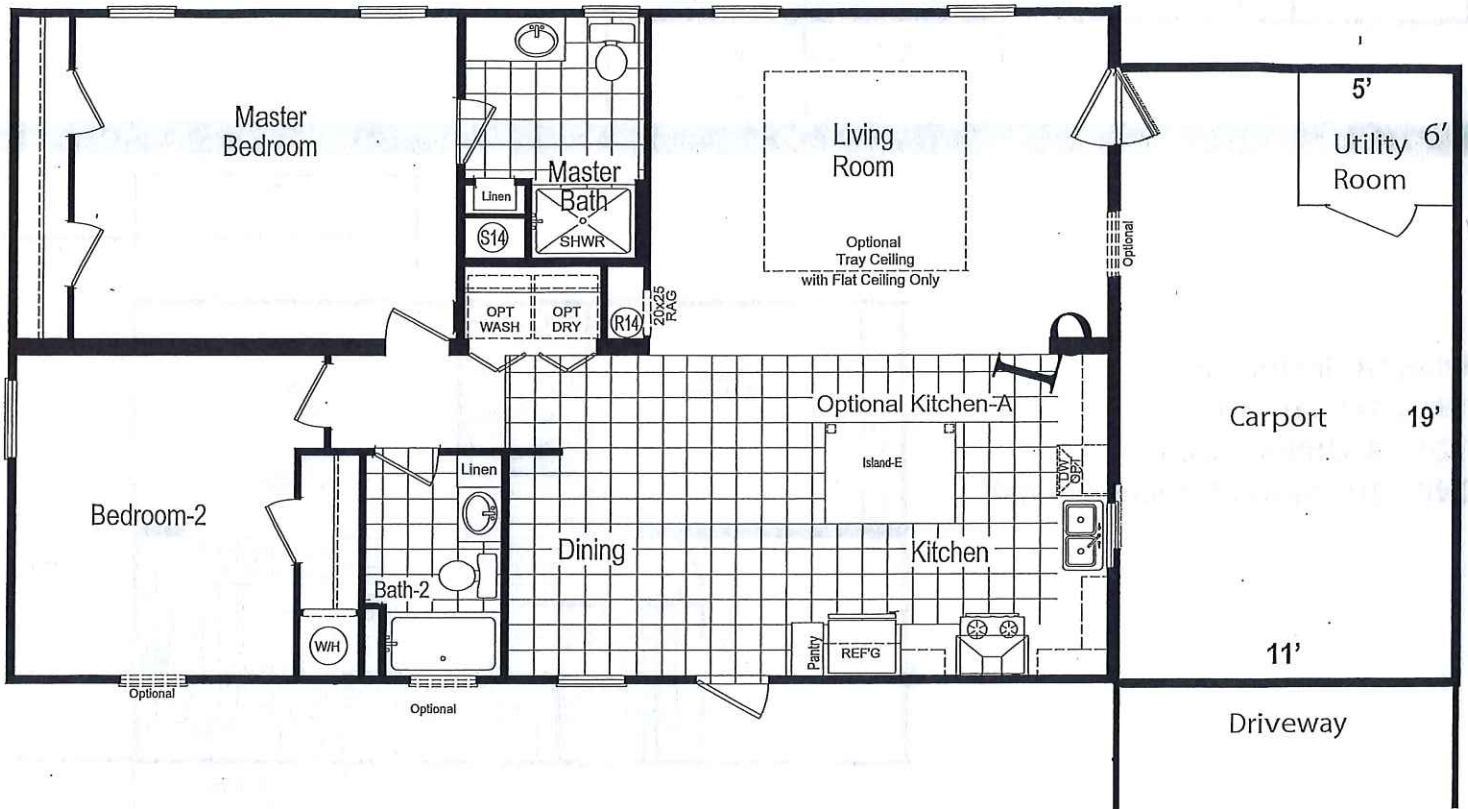


The Azalea

AT THE PRESERVE

Base Price - \$108,655.00

Two (2) Bedroom, Two (2) Bath
1179 Sq. Ft



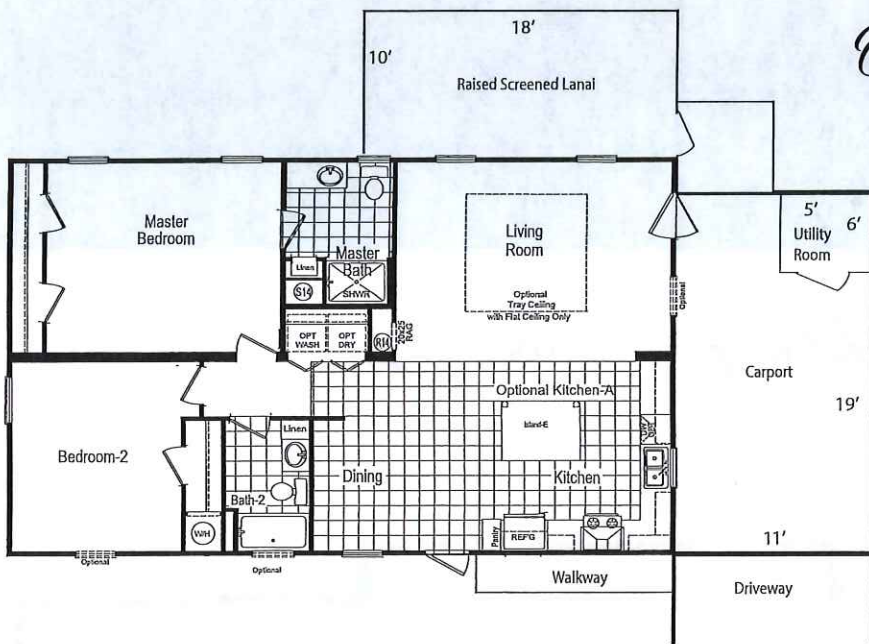
Options Shown in this Model:

Lifestyle interior package	\$1,750	Upgrade interior doors w/lever handles	\$360
Optional Master Bath package	1,165	Crescent edging kitchen/baths	215
Upgraded strip light M/B	90	Optional kitchen	1,000
LED light M/B Shower	75	Elongated commodes	120
Extra window living room	550	Extra lav master bath	140
Whole house shut-off	75	Cypress trim baths	130
30 x 8 window bath	100	Panel box cover	50
Upgrade carpet 1 level	175	Upgrade light package LED	250
Extra exterior outlet	90	Waterproof light M/B Shower	90
Ceiling fans 2	400		

Total - \$115,480.00

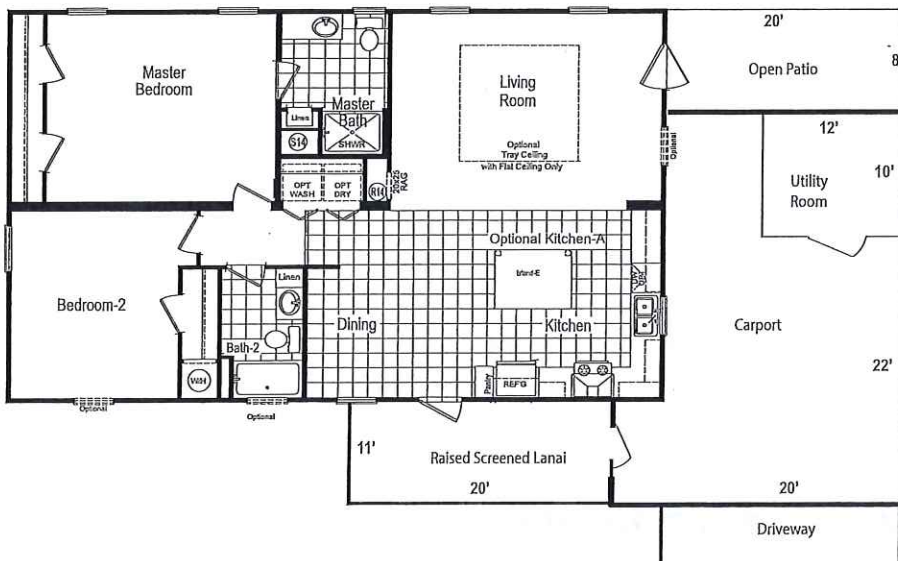
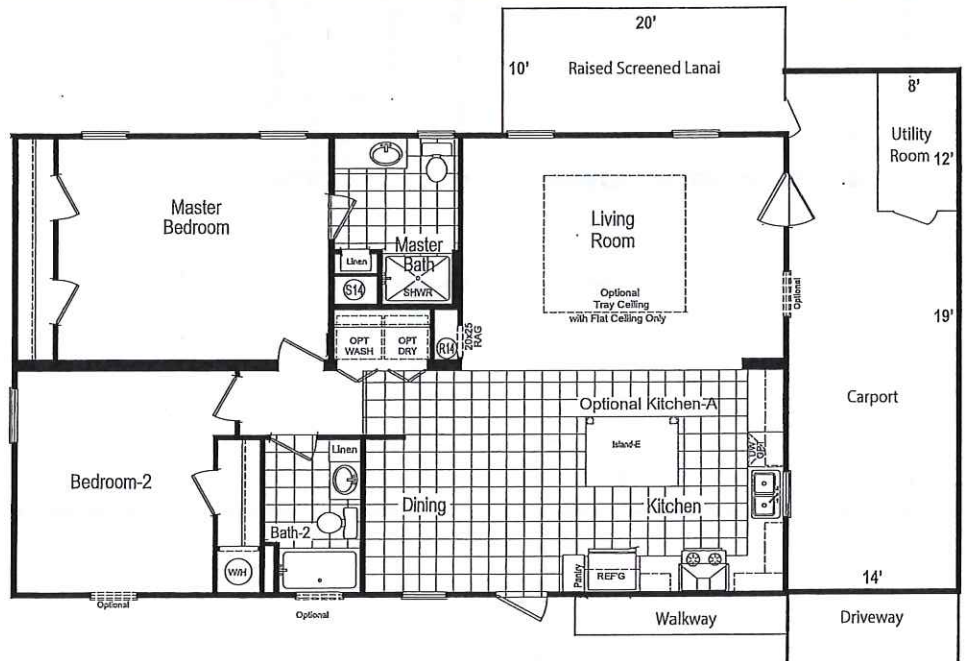
All measurements are approximate and may not be to scale.

Optional Exterior Packages



Plan "A" includes:
 19' x 11' Carport
 6' x 5' Utility Room
 18' x 10' Raised Screened Lanai

Plan "B" includes:
 19' x 14' Carport
 12' x 8' Utility Room
 20' x 10' Raised Screened Lanai



Plan "C" includes:
 22' x 20' Carport
 20' x 8' Open Patio
 12' x 10' Utility Room
 20' x 11' Raised Screened Lanai