



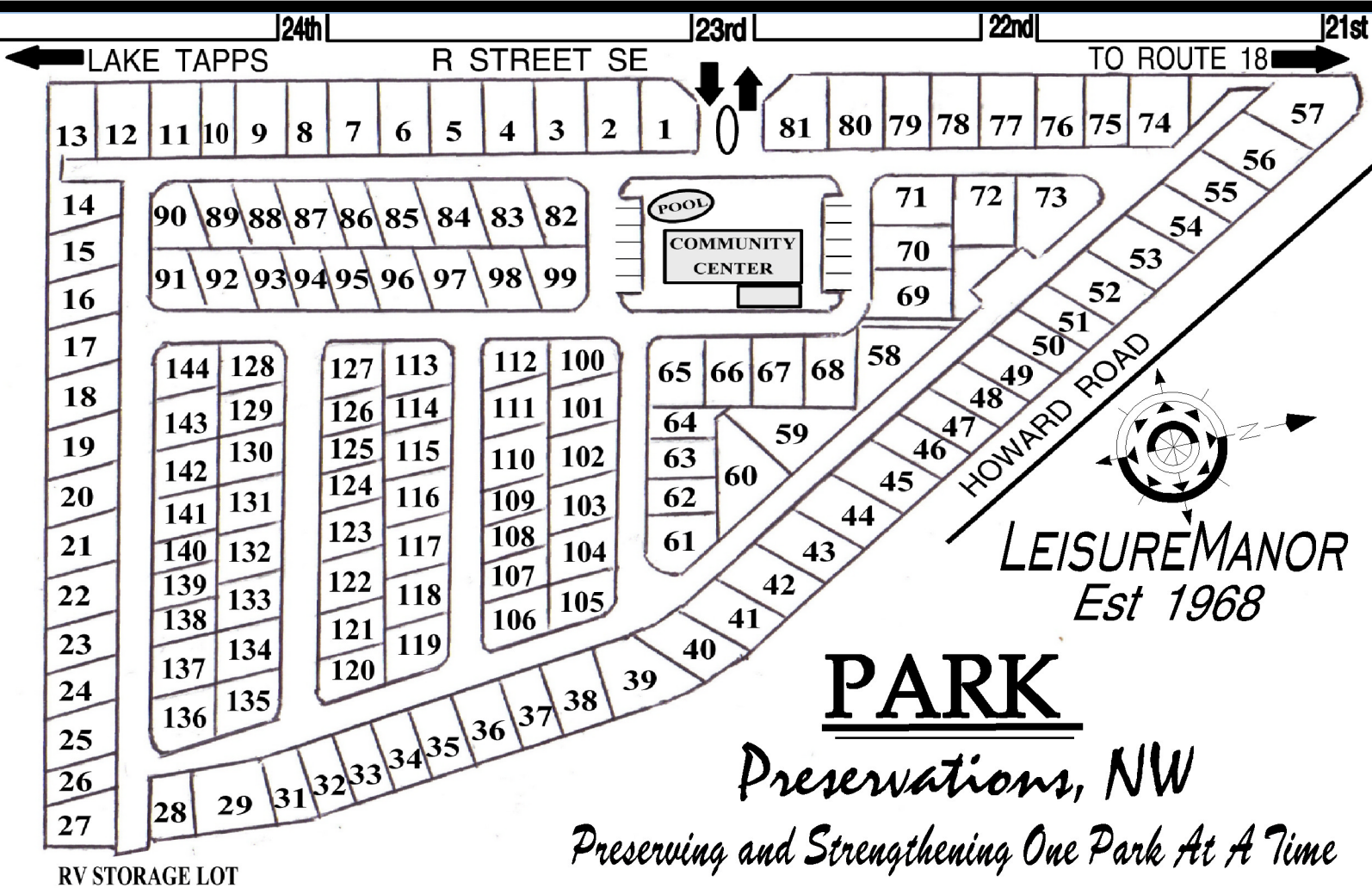
**AFFORDABLE
SENIOR LIVING**

Leisure Manor

A 55+ AGE RESTRICTED MOBILE HOME PARK

- ☆ An adult mobile home park that is professionally managed by Park Preservations, NW, who are dedicated to preserving our senior communities.
- ☆ On site residents clubhouse has laundry facilities, complete kitchen, billards, full showers, a banquet/meeting room and library.
- ☆ All mobile homes are placed on full asphalt pads and includes a 9 ft by 40 ft concrete side pad.
- ☆ A full sized heated pool located next to the Clubhouse, with special hours set aside for visiting grandchildren.
- ☆ A quiet, fun and professionally managed place for seniors to live.

2302 R Street SE Auburn, WA 98002 Tel: 253.939.0505



THE MANAGEMENT TEAM

Jeremy Millard, MBA is a licensed real estate broker and property manager specializing in evaluating the business risks and opportunities with prospective mobile home park acquisitions. Jeremy graduated Magna Cum Laude from the Milgrad School of Business at the University of Washington and in 2006 earned his MBA from the University of Washington.

Jonathan Millard, JD is a property manager specializing in park acquisitions and managing back office processes. He is also a long-standing real estate licensee, and mobile home dealer and installer. Jon earned his Bachelor's Degree from Brigham Young University and received a Juris Doctorate after completing law school from Concord University.

Robert Gantz, United States Air Force Retired, is the Resident Manager for our senior community. Bob is an experienced field and office manager, and has an extensive background as a graphics project designer. Bob lives onsite and will lend his assistance to helping you choose your new home.

It is the mission of Park Preservations, NW to provide and perpetuate affordable housing to the public while generating a reasonable return to our investors. Despite the growing trend to redevelop mobile home parks and displace low-income and senior-aged tenants, we have a proven history of having never redeveloped one of our mobile home communities and have thereby provided confidence to both the sellers of these communities and the tenant base that their neighborhoods will always be a place that they can call home. Leisure Manor is an affordable senior community you can call home.

...a complete mobile home park for senior living

- 143 landscaped units.
- wide streets with curbing.
- underground utilities (electricity & natural gas).
- space rent includes water, sewage and garbage.
- park is located on private property with absolutely no solicitors or trespassing allowed.
- an on site secured recreational vehicle storage area for up to 25 campers, trailers, rv's or boats.
- heated swimming pool for all residents to enjoy.

...where leisure is a way of life.

Leisure Manor offers you freedom from worry. A member of the management team is only a phone call away to handle park emergency situations when the office is closed. We also have onsite expertise that will take the stress and worry out of selling your home, should the need ever arise.

We are 35 minutes south of Seattle, 20 minutes north of Tacoma and 20 minutes from SeaTac International Airport. Just minutes from Game Garm Park, the Muckleshoot Casino, the Super Mall and Lake Tapps.

.....to reach leisure manor

Drive south from Highway 18 on Auburn Way South (164). Bear right onto Howard Road after crossing the M Street intersection (Walgreens Pharmacy on your right).

Take a right at the stop sign, you are now on "our" street. Go south for two blocks, the park entrance will be on your left (opposite 23rd Street).

