

*Looking for a place
to call home?*



**WE HAVE A SPACE FOR YOUR NEW
MANUFACTURED HOME OR RV**



**If RV or mobilehome living fits your
budget, and affordable space rent
is important, then contact Plaza
Park today.**



*Let Us Introduce
Ourselves!*



**Contact Us At:
(360) 933-1069**

**Nonprofit Owned &
Managed By:**

**Resident Owned Parks, Inc.
7420 Greenhaven Drive, #125
Sacramento, CA 95831
(916) 399-4993
www.residentownedparks.com**



**A Nonprofit Owned Park
Providing Mobilehome
and
RV Spaces for
Low-Income Persons in
Whatcom County**

**Plaza Park
Mobilehome Park**

**4414 Birch Bay Lynden Road
Blaine, Washington 98230
(360) 933-1069**



Is there a place that actually provides an affordable housing alternative for low-income persons in Whatcom County?

Yes, nonprofit owned Plaza Park is a mobilehome and RV park providing long-term, and permanent spaces for mobilehomes and RVs used as permanent housing. People need affordable housing now more than ever. If you are in the market for an affordable mobilehome, Plaza Park has a limited number of available mobilehome spaces. If you have a travel trailer, motorhome, fifth-wheel, or park model, and are looking for a long-term or permanent RV space rental to use as your permanent housing, Plaza Park has over twenty full hook-up RV spaces available for rental. Plaza Park is conveniently located just minutes from Bellingham, at 4414 Birch Bay Lynden Road, in Blaine, Washington. Take I-5 North from Bellingham to the Birch Bay Lynden Road exit. Turn left at the stop sign and continue on Birch Bay Lynden Road until you reach Plaza Park on your right.

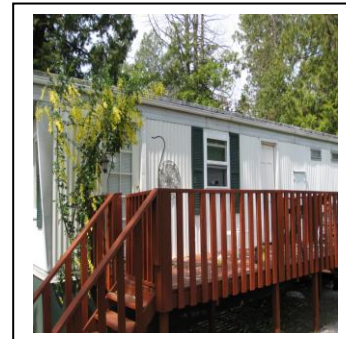
Plaza Park is owned and operated by nonprofit Resident Owned Parks, Inc. which provides affordable housing to persons in California and Washington. Plaza Park was purchased with financial support and assistance from the State of Washington as a long-term affordable housing community

which provides long-term and permanent RV space rentals for low-income persons who are living in travel trailers, campers, fifth-wheels and motorhomes. Plaza Park is not an overnight RV campground but is designed to meet the needs of low-income Whatcom County residents who wish to purchase a mobilehome and live in the mobilehome section of Plaza Park, or who have an RV which can be placed on an available rental RV space. In order to live in Plaza Park, you must contact the park's management representative and complete an application for tenancy.

In 2009, full-service RV spaces rent for less than \$350 per month, plus utilities and mobilehome spaces rent for less than \$400 per month plus utilities.

Cable TV service and telephone service are available at each space. The nonprofit ownership and management of Plaza Park assures that you will not be priced out of the park due to exorbitant rental increases. Space rent increases at Plaza Park do not exceed 3% per year.

If you have limited financial resources, but have the ability to pay monthly rent and utilities at an affordable price, contact the management representative at Plaza Park, at (360) 933-1069 or tour the park and obtain an application at Plaza Park, 4414 Birch Bay Lynden Road, Blaine, Washington.



FINDING A HOME THAT'S RIGHT FOR YOU >>>

Homebuyers OK >>>

Renters OK >>>

Low Income OK >>>

PLAZA PARK MOBILEHOME PARK

4414 Birch Bay Lynden Road
Blaine, Washington 98230

(360) 933-1069