

#158

O.T.S.-JAMI-10-23-13

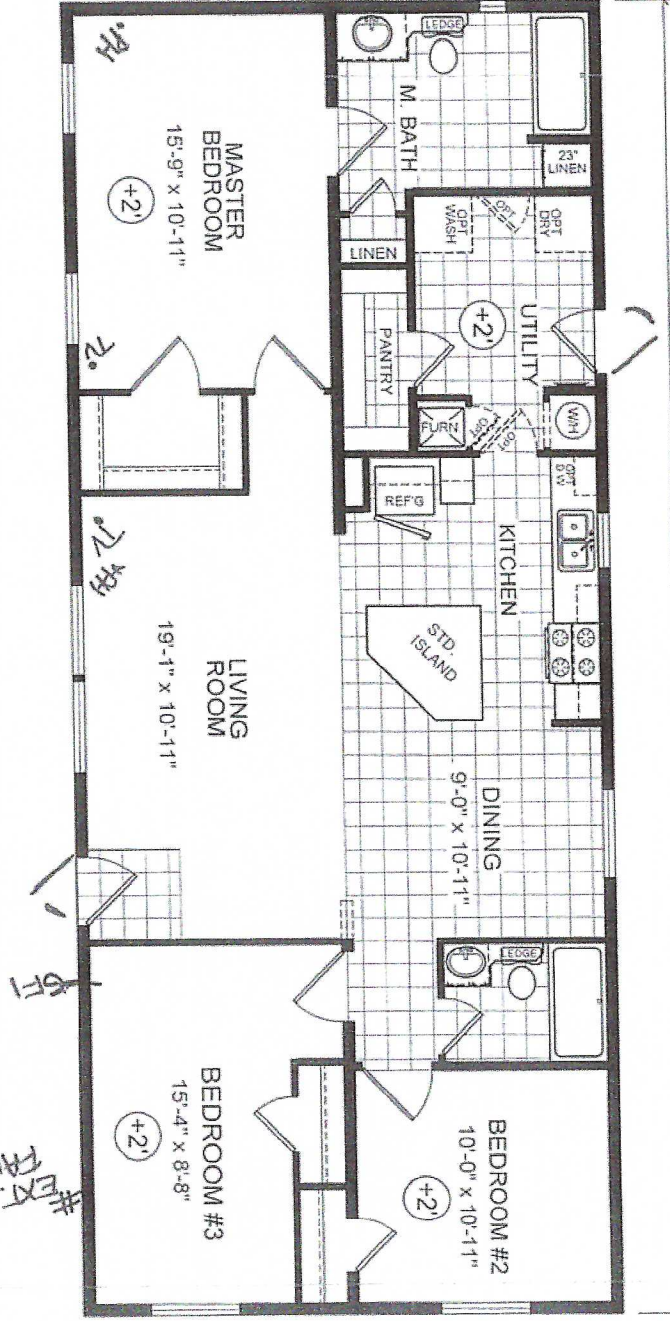
2424

BUILD AS A 24' WIDE
STRETCH 4 FEET
RE-CONFIGURE BEDROOM 2 & 3 CLOSETS
ENLARGE AND MOVE B/R 2 & 3 WINDOWS TO GABLE END

REV. 1- 10-25-13
REV. 2- 10-29-13

56'

23'-4"



MODEL 122-B-529
3 BEDROOM, 2 BATH
NOMINAL SIZE: 24' x 60'
TOTAL AREA: 1306 SQ. FT.

Redman Homes
BY THE SIDE
CHAMPION
Home Builders, Inc.
(Plant #122)

APPROVER'S SEAL

MODIFICATIONS

MODEL: 122-A-529

REDMAN-ELITE

TITLE: LITERATURE PLAN

DRAWN BY: STAFF

DATE: 08-10-10

SCALE 1/8" = 1'-0"

SHEET

L-101

PROPRIETARY AND CONFIDENTIAL
THESE DRAWINGS AND SPECIFICATIONS ARE ORIGINAL
PROPRIETARY AND CONFIDENTIAL MATERIALS OF CHAMPION