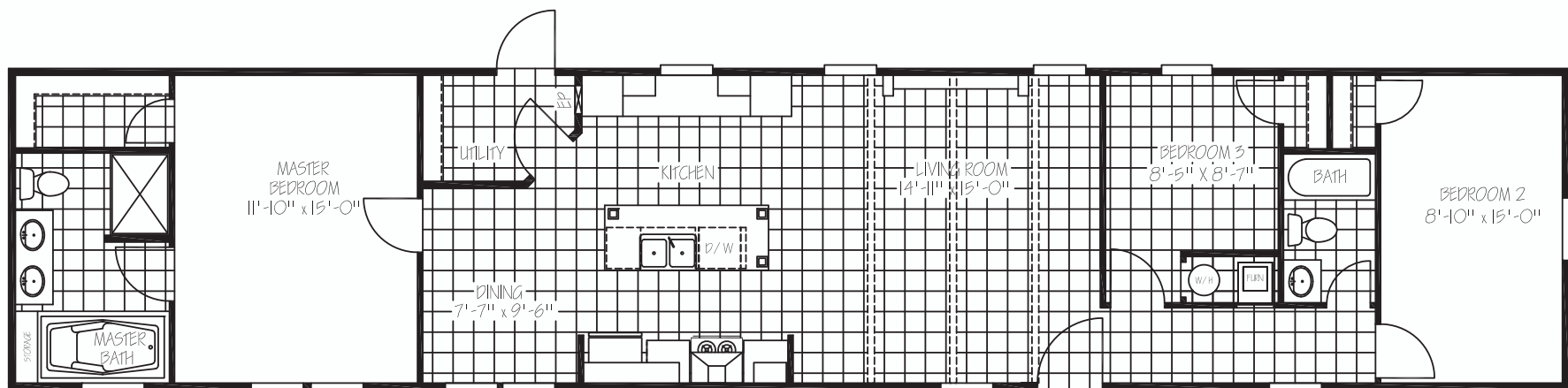


# THE JACKSON

## ★ ★ ★ THE AMERICAN SERIES

MODEL: **AMS16763B** | 16 X 76 | 1,191 SQ. FT. | 3 BED 2 BATH



1001 W. Loop 340 | Waco, Texas 76712 | 254-235-0222 | [www.JessupHousing.com](http://www.JessupHousing.com)

# STANDARD | FEATURES

★ ★ ★ THE  
**AMERICAN**  
S E R I E S

## EXTERIOR

- Low E Thermal Pane Windows
- Steel Front Door with Full View Storm
- Cottage Rear Door
- Vinyl Siding / Comp Roof
- Whole House Wrapped in OSB
- 5" Lineal Trim
- 16" on Center Floor Joist

## KITCHEN

- 42" Overhead Cabinet System
- 3/4" Hardwood Cabinet Doors
- Lined Overhead Cabinets
- Lined Center Shelf in Base Cabinets
- Brushed Nickel Lever Handles Interior Doors
- White Farmhouse Kitchen Sink
- Spring-loaded Faucet
- 4 LED Flush Mounted Ceiling Lights Kitchen

## INSULATION

- R-21 Blown Fiberglass Roof *(Formaldehyde Free)*
- R-11 Fiberglass Insulation in Walls *(Kraft Back)*
- R-11 Fiberglass Insulation in Floors

## INTERIOR

- 8 Foot Flat Ceilings
- Beamed Ceiling in Living Room
- Upgrade Lino Living Room
- 52" Brushed Nickel Ceiling Fan in Living Room
- Wire and Brace for Ceiling Fan Master Bedroom
- Brushed Nickel Glass Light Fixtures in all Bedrooms
- LED Flushed Mounted Ceiling Lights Hallway
- 2" Blinds Throughout Except Master Bath

## APPLIANCES

- 18 Cubic Foot Frost Free Black Refrigerator
- Plumbed for Ice maker
- 30" Black Electric Range
- Black Dishwasher
- Stainless Steel/Glass Vent-A-Hood
- 30 Gal. Dual Element High Efficiency Water Heater

## UTILITY

- Total Electric with 200 Amp Service
- Exterior Outlet Front Door Side
- Water Shut Offs at Toilets Only
- Master Water Shut-Off Valve in Utility
- Utility Door

## BATHS

- 72" Deck Tub W/Cab Door Access to Plumbing
- 48" Fiberglass Shower W/Glass Doors
- Dual Ceramic Lavs in Master Bath
- LED Flush Mounted Ceiling Lights over Shower, Tub, Lav
- 54" Fiberglass Tub/Shower in Guest Bath
- Brushed Nickel Metal Faucets w/Lever Handles
- Elongated Toilets

## POPULAR OPTIONS

- Wind Zone 2
- Wind Zone 3
- Thermal 3
- 30 lb. Roof Load
- Gas Furnace
- Gas Range
- 100 AMP Electric Panel Box
- Humid and Fringe
- Smart Panel with Trim around all Windows