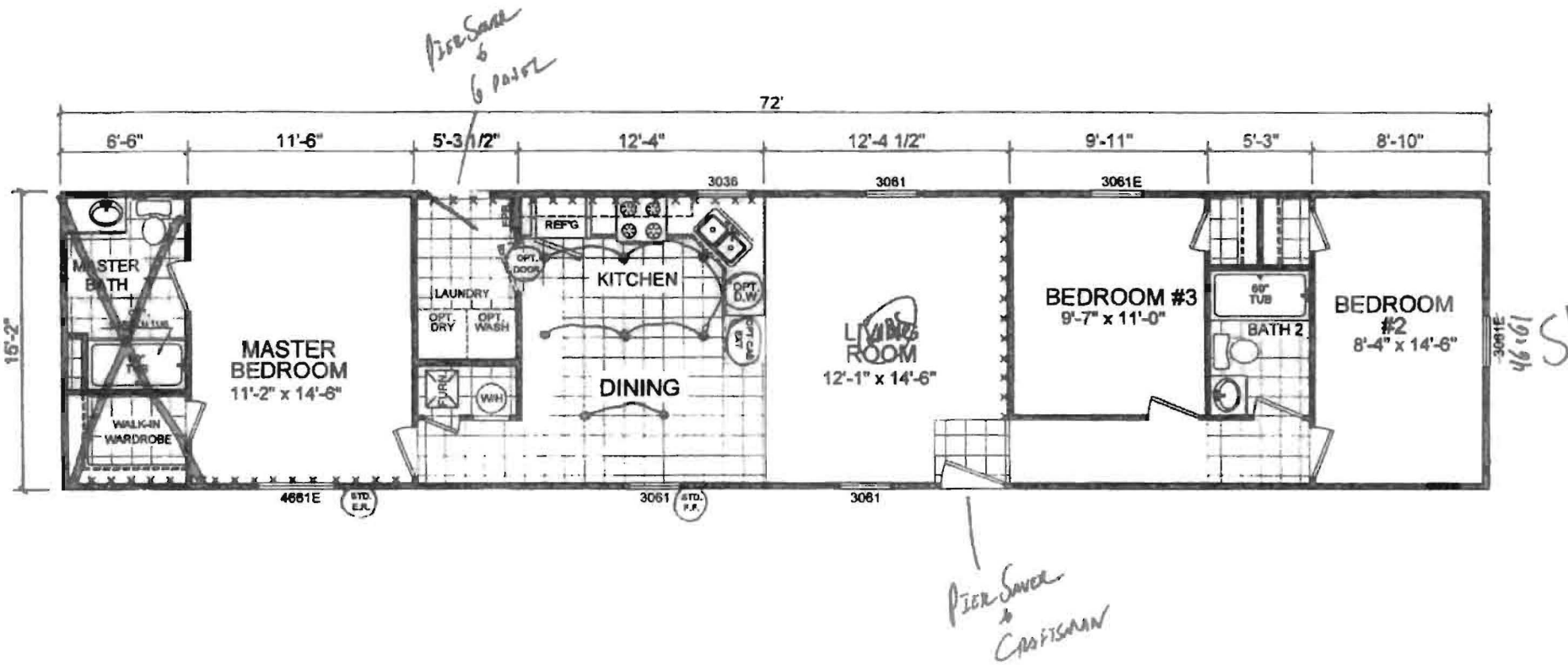


FAMILY 5

Full Drywall



2-6 ENT w/ R19

DocuSigned by:
Thomas Radl
A0363EDDC57C4E3...

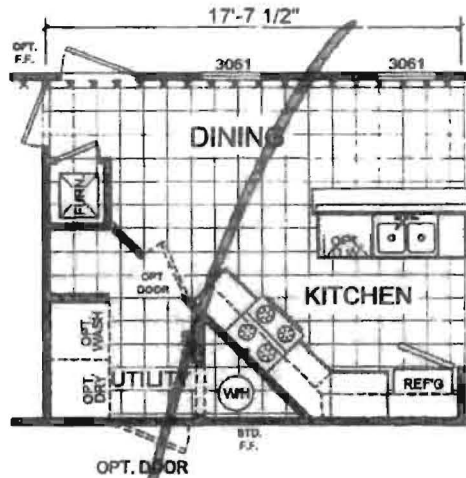
DocuSigned by:
John Murphy R33 Roof
562B668A1029451...

<p>308 SHERIDAN DRIVE TOPEKA, IN 46571</p>	APPROVER'S SEAL	MODIFICATIONS 1 REVISED LAYOUT, 2015 UPDATES JMD 11-10-14 2 SHOW EXT CAB -- 05-11-16 3 MOVED STD FF TO FDS JJF 12-15-16 4 2019 UPDATES JR 06-04-19	MODEL: 1676 201 3BR 2BATH TITLE: LITERATURE PLAN	SHEET: L-101
	PROPRIETARY AND CONFIDENTIAL THESE DRAWINGS AND SPECIFICATIONS ARE ORIGINAL PROPRIETARY AND CONFIDENTIAL MATERIALS OF CHAMPION. COPYRIGHT © 1978-2018 BY CHAMPION	DRAWN BY: T. Cowley DATE: 08-07-16 SCALE: 1/8" = 1'-0"	REV. B	

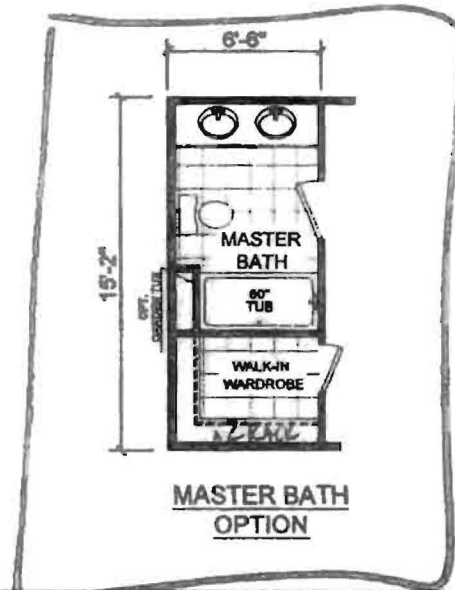
FAMILY 5



2 BEDROOM OPTION



KITCHEN OPTION



MASTER BATH OPTION

DocuSigned by:

John Murphy
562B668A1029451...

CHAMPION

308 SHERIDAN DRIVE TOPEKA, IN 46571

APPROVER'S SEAL

MODIFICATIONS

1	REVISED LAYOUT, 2015 UPDATES	JMD	11-10-14
2	SHOW EXT CAB	---	05-11-15
3	ADDED MBA OPTION	TWC	01-05-16
4	2019 UPDATES	JR	06-04-19

PROPRIETARY AND CONFIDENTIAL
THESE DRAWINGS AND SPECIFICATIONS ARE ORIGINAL
PROPRIETARY AND CONFIDENTIAL MATERIALS OF CHAMPION.
COPYRIGHT © 1978-2008 BY CHAMPION

MODEL: **1676 201**
3BR 2BATH

TITLE: **LITERATURE PLAN-OPT.**

DRAWN BY: T. Cowley DATE: 06-07-16

SCALE: 1/8" = 1'-0"

SHEET:

L-102

REV. A