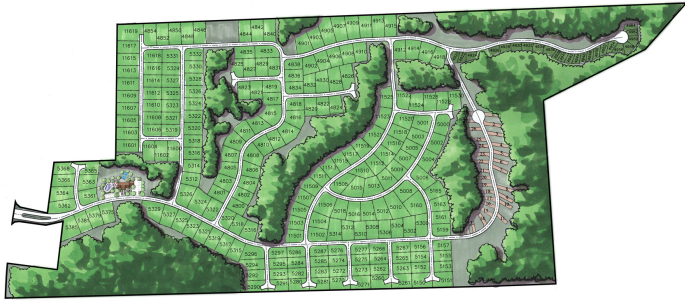
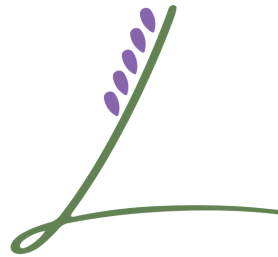


A Master Planned Community



Final Planned Community



CONTACT US

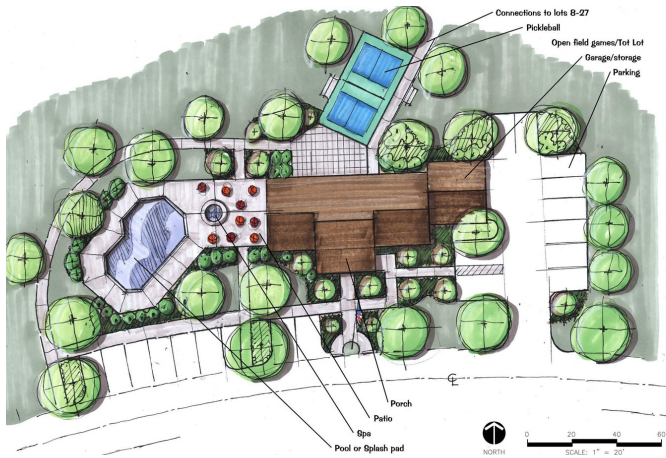
(903) 574-2794

5394 Wind Dancer, Tyler, 75706

info@lavendercommunities.com

www.lavendercommunities.com

Relaxed Convenient Living



Planned Office and Community Center

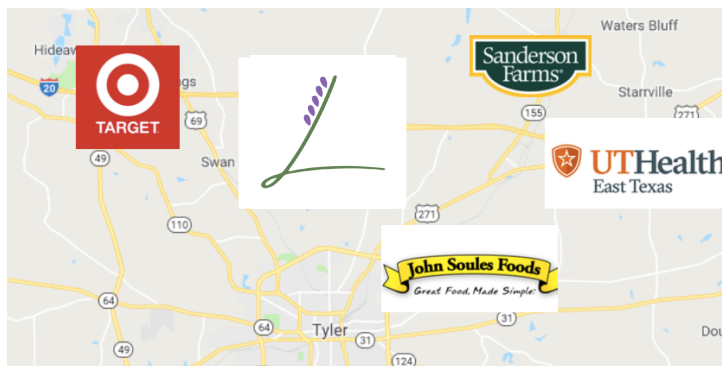
5394 Wind Dancer,
Tyler, TX 75706

ABOUT US

Our management team has over 75 years combined experience in property management. The Lavender Communities management team is located in Tyler Texas and is engaged in their communities.

We know your life is busy and hectic, so it is our desire to create a relaxed atmosphere in our manicured country setting and provide a convenient location with simple ways to manage your living at Lavender Place.

We look forward to finding the perfect location for your next home!



2 miles from I-20, 3 miles to Loop 323, 6 miles to Lindale and 6 miles to Downtown Tyler

NEW LOTS

Single Wide Lots

- \$355 per month lot rent
- Smallest Lot 65' X 113'

Double Wide Lots

- \$395 per month
- Smallest Lot 70' X 120'

Lot Features

- 20' X 20' Concrete Parking
- Concrete Sidewalks
- Storage Sheds
- Mature Oaks
- City Sewer
- Curbside Trash

Take the stress out of living

COMMUNITY FEATURES

- Online Bill Pay
- Winona or Tyler ISD
- Dog Park
- Picnic Area
- Nature Trails
- Street Lamps
- High-speed Internet

