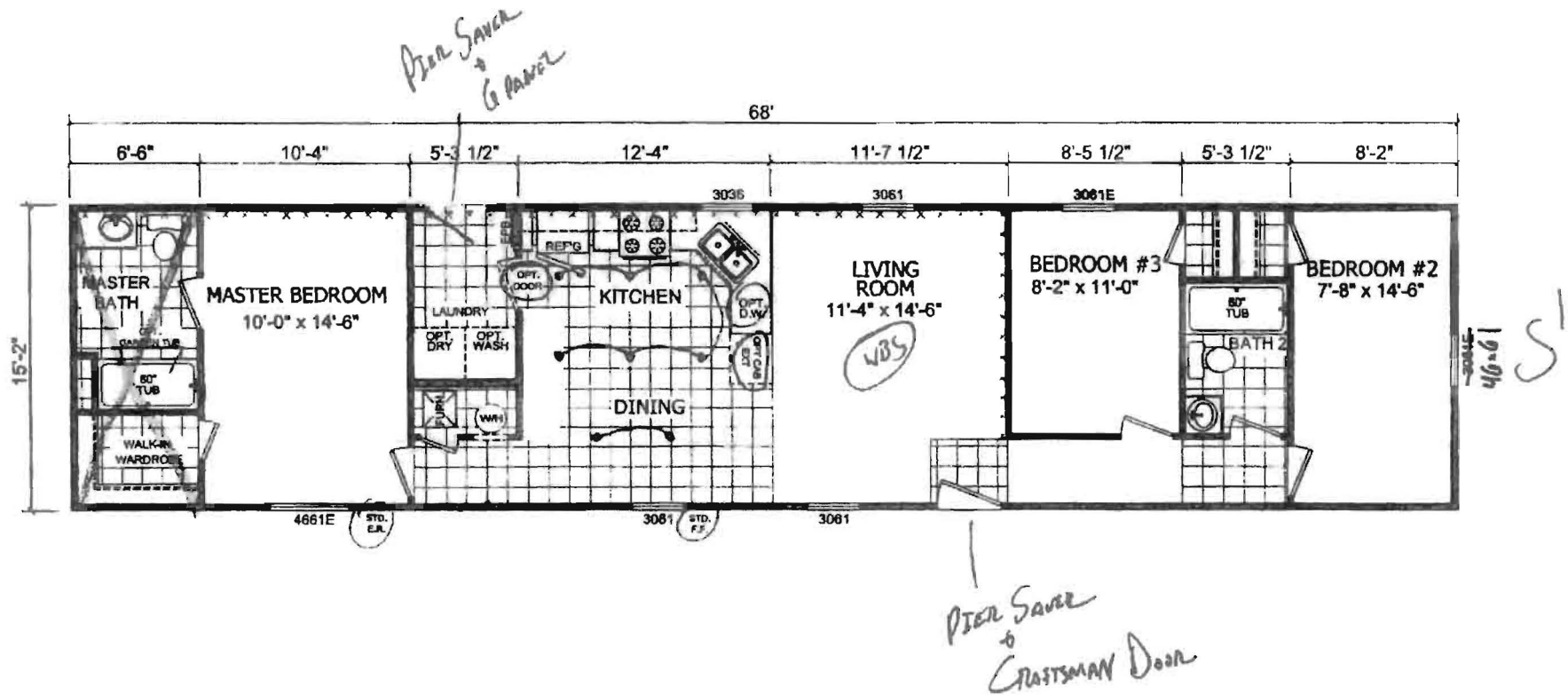


Full Drywall

FAMILY 5



2-6 EXT W/P19

DocuSigned by:

Thomas Radl

DocuSigned by:

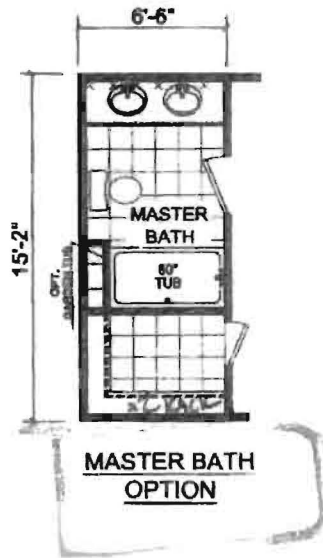
John Murphy B33 Roof

AD363E0DC57CAE3

562B668A1029451...


<p>308 SHERIDAN DRIVE TOPEKA, IN 46571</p>	<p>APPROVER'S SEAL</p>	<p>MODIFICATIONS</p>		<p>MODEL: 1672 205</p> <p>3BR 2BATH</p>	<p>SHEET: L-101</p> <p>REV. K</p>
		<p>1 REVISED LAYOUT, 2015 UPDATES JMD 11-10-14</p>	<p>2 SHOW EXT CAB - 05-11-15</p>	<p>TITLE: LITERATURE PLAN</p>	
		<p>3 REVISED OPTIONAL 2 BEDROOM LAYOUT SMD 02-15-17</p>	<p>4 2019 UPDATES JR 11-26-18</p>	<p>DRAWN BY: jdrake DATE: 10-02-14</p>	
		<p>PROPRIETARY AND CONFIDENTIAL THESE DRAWINGS AND SPECIFICATIONS ARE ORIGINAL PROPRIETARY AND CONFIDENTIAL MATERIALS OF CHAMPION COPYRIGHT © 1978-2008 BY CHAMPION</p>		<p>SCALE: 1/8" = 1'-0"</p>	

FAMILY 5



DocuSigned by:

John Murphy
562B668A1029451...

 308 SHERIDAN DRIVE TOPEKA, IN 46571	APPROVER'S SEAL	MODIFICATIONS	MODEL: 1672 205 3BR 2BATH	SHEET:	
		4 ADDED LR TO CLARIFY DIMS JR 02-14-17 5 REVISED OPTIONAL 2 BEDROOM LAYOUT SMD 02-15-17 6 ADDED MASTER BATH OPTION JR 02-12-18 7 2019 UPDATES JR 11-26-18	TITLE: LITERATURE PLAN-OPT DRAWN BY: jdrake DATE: 10-02-14 SCALE: 1/8" = 1'-0"	L-103 REV. L	
		PROPRIETARY AND CONFIDENTIAL THESE DRAWINGS AND SPECIFICATIONS ARE ORIGINAL PROPRIETARY AND CONFIDENTIAL MATERIALS OF CHAMPION COPYRIGHT © 1978-2008 BY CHAMPION			