

12" OVERHANG  
27'-0"

14" EAVE  
12" OVERHANG  
16" OVERHANG  
12" OVERHANG  
14" EAVE

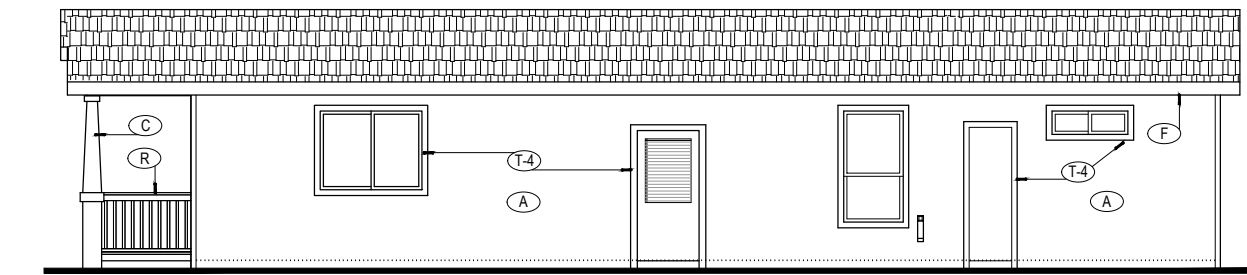


1400 MARLBOROUGH AVE.  
RIVERSIDE, CA 92507  
(951) 294-1844

**PRODUCT DEVELOPMENT FLOORPLAN - 1422 SQ. FT. (HUD)**  
**SEA BREEZE / SB5800 27-0-F-001.000**

\* Information shown is subject to change pending final engineering approval

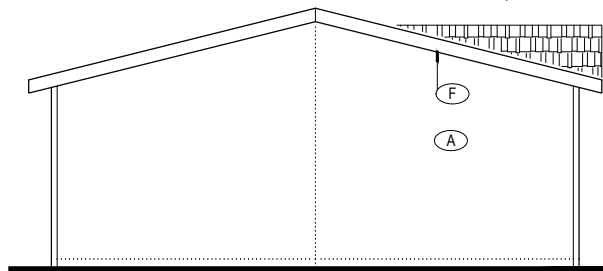
(6) 09.27.22 dh



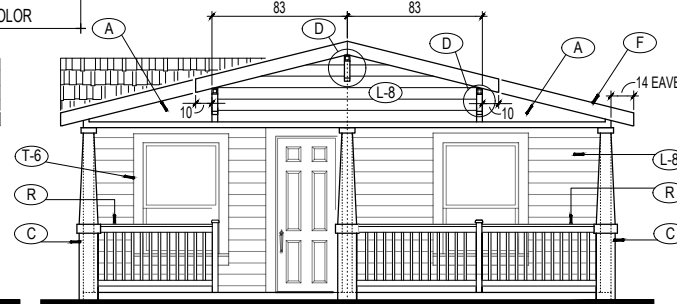
**REAR SIDEWALL**

ON 2-COLOR EXTERIORS,  
ALL ACCENT AREAS  
SHALL BE PAINTED  
TRIM COLOR

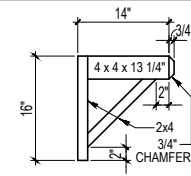
FIELD INSTALL DORBEL  
AND LAP SIDING AT M.L.  
AREA AS NEEDED



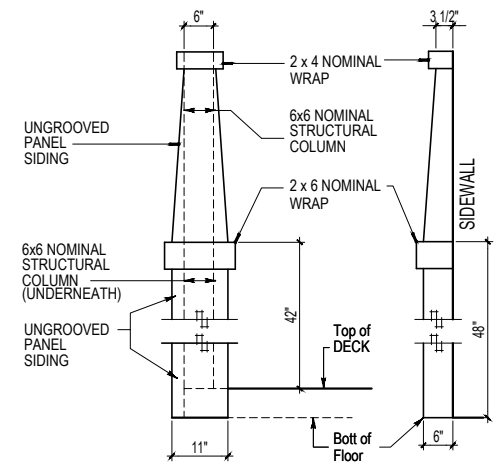
**REAR ENDWALL**



**PORCH FRONT ENDWALL**



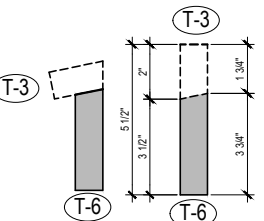
**CORBEL 2**



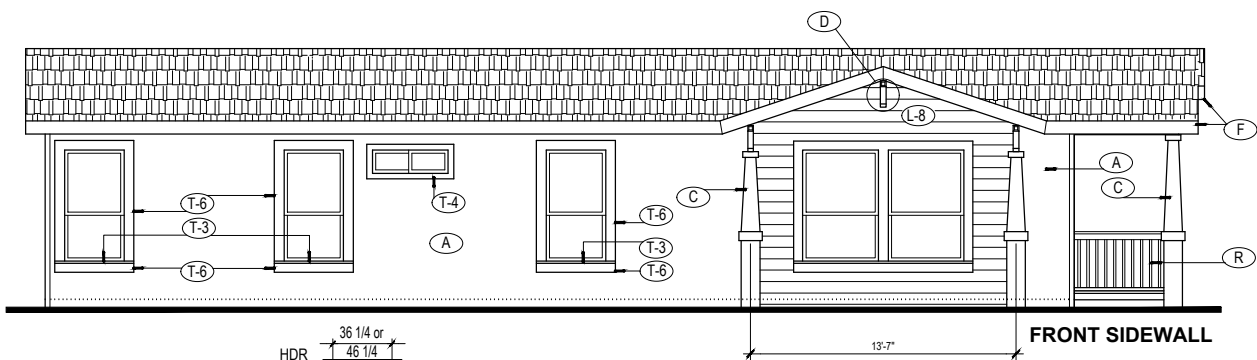
**COLUMN 1**

**EXTERIOR LEGEND:**

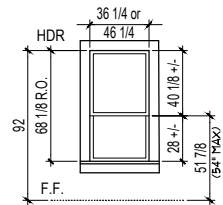
- (A) - VERTICAL SIDING (BODY COLOR)
- (C) - COLUMN - 6 x 6 W/ OPTION BASE SEE DETAIL (TRIM COLOR)
- (D) - CORBEL - SEE DETAIL (TRIM COLOR)
- (F) - 4/4 x 8 FASCIA (TRIM COLOR)
- (L-8) - 8" LAP SIDING (BODY COLOR)
- (K-8) - BOARD & BATTEN SIDING (ACCENT COLOR)
- (T-3) - 4/4 x 3 (SEE DETAIL) - ON EDGE RIPPED FROM T-6 (TRIM COLOR)
- (T-4) - 4/4 x 4" (NOMINAL) TRIM (TRIM COLOR)
- (T-6) - 4/4 x 6" (NOMINAL) TRIM (TRIM COLOR)
- (R) - 42" RAILING (TRIM COLOR)



**WINDOW SILL TRIM**



**FRONT SIDEWALL**



\*These units built with sash for 58 5/8 call height unit.

**(SB) SEA BREEZE**



DRAWING TITLE		<b>SEA BREEZE EXTERIOR ELEVATIONS</b>		PRODUCT	SEA BREEZE	MODEL#	<b>SB5800</b>
APPROVAL REF:		S.N. REF:	CMH FILE INFO ONLY	SQ. FT.	09-01-22	DATE	1,422
			F: --	DRAWN BY:	D. HOLT	SHEET	<b>2-B</b>

REVISED	10.01.22	DH	
---------	----------	----	--