



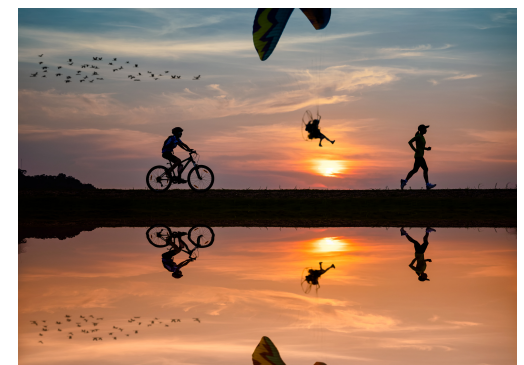
PARADISE LAKES



Located in Deltona, Florida, Paradise Lakes is a quiet community to sit back and relax. We are a 55+ community nestled between Panama Lake and Paradise Lake. Our park is adorned with many Oaks and Native Florida trees draped with the old Spanish moss that sways with the gentle breeze of the lakes. It has a true rustic Florida feel and is in the center for access to all Orlando attractions. Join our community and experience all the picturesque feels that it has to offer!

Contact Us

1571 Doyle Rd, Deltona, FL, 32725
(386) 574-2371
paradiselakes@parakeetcommunities.com
www.parakeetcommunities.com





Nearby Attractions

- Valiant Air Command Warbird Museum
- Enchanted Forest Sanctuary
- Space View Park
- Titusville Playhouse
- Chain of Lakes Park
- Playalinda Brewing Company
- Sand Point Park
- Pritchard House
- Manatee Observation Deck & more!

Community Amenities

- Onsite Office
- Community Clubhouse
- Laundry Facility
- Fishing Dock
- Mail Center and more!

"PARAKEET COMMUNITIES
IS A GREAT PLACE TO LIVE.
EVERYTHING GETS TAKEN
CARE OF PROMPTLY!"